

Cisco Packet Tracer

ติดตั้ง

- Computer network simulation software
- Cisco Networking Academy

<https://www.netacad.com/>

- Download


<https://www.netacad.com/resources/lab-downloads?courseLang=en-US>

The best way to learn is to do it.

To complete the hands-on activities in the courses, you might need to download and install on your computer some of the lab tools you can find below on this page:

Please login to download resources.

1 [Login](#)



Build Your Skills With Cisco

Pursue real career paths through instructor-led courses taught by experts and free, online courses backed by Cisco's expertise.



Networking Academy

Welcome!

Please login to your account.

Email

[Forgot Password?](#)

[Login](#)

Or continue with

2

 Google



Cisco Packet Tracer

Cisco Packet Tracer, an innovative network configuration simulation tool, helps you hone your networking configuration skills from your desktop. Use Packet Tracer to experiment while building, managing & securing infrastructures.

To obtain and install your copy of Cisco Packet Tracer, please follow these simple steps:

Step 1.Download the version of Packet Tracer you require.

[Packet Tracer 8.2.2 MacOS 64bit](#)

[Packet Tracer 8.2.2 Ubuntu 64bit](#)

3 [Packet Tracer 8.2.2 Windows 64bit](#)

Step 2.Launch the Packet Tracer install program.

Step 3.Launch Cisco Packet Tracer by selecting the appropriate icon.

Step 4.When prompted, click on Skills For All green button to authenticate.

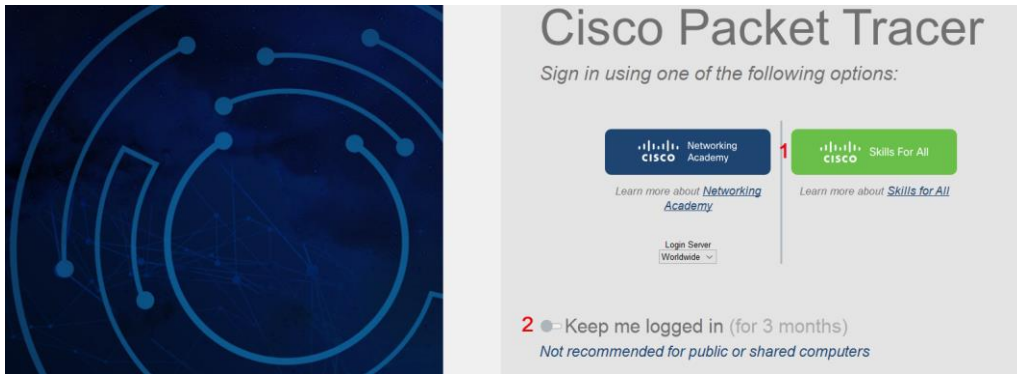
Step 5.Cisco Packet Tracer will launch and you are ready to explore its features.

If you need more guidance, please follow the [Cisco Packet Tracer Download and Installation Instructions](#).

System Requirements:

Computer with either Windows (10, 11), MacOS (10.14 or newer) or Ubuntu (20.04, 22.04) LTS operating system, amd64(x86-64) CPU, 4 GB of free RAM, 1.4 GB of free disk space

เรียกใช้



Welcome!

Please login to your account.

Email

[Forgot Password?](#)

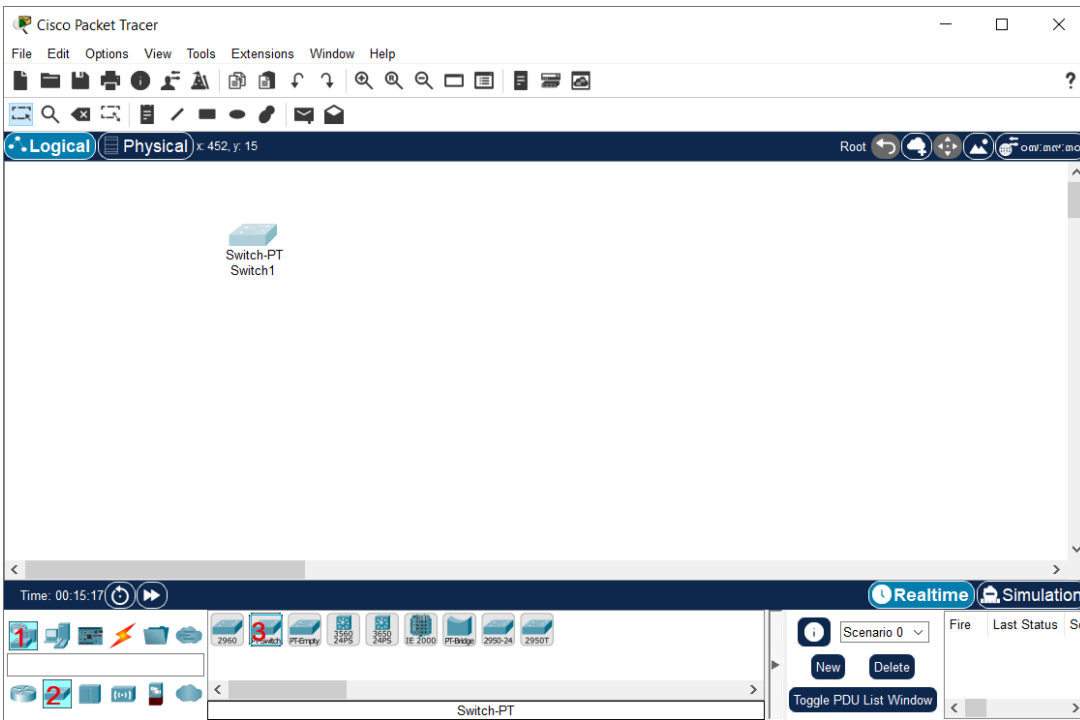
Login

Or continue with

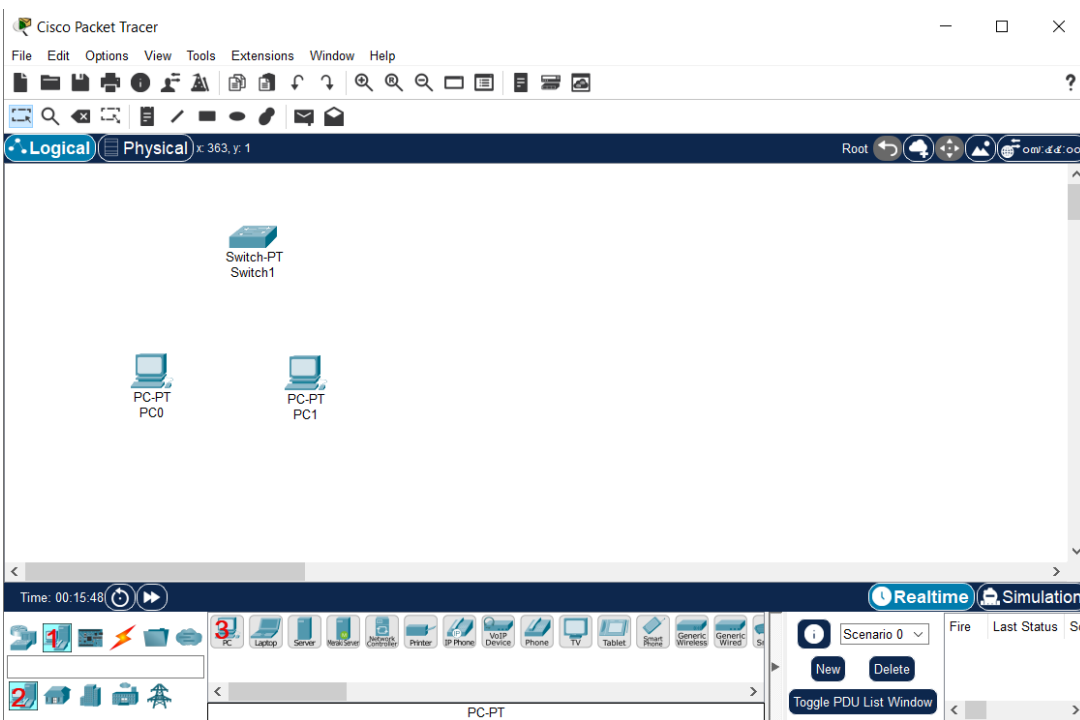
3  Google

สร้างเครือข่าย

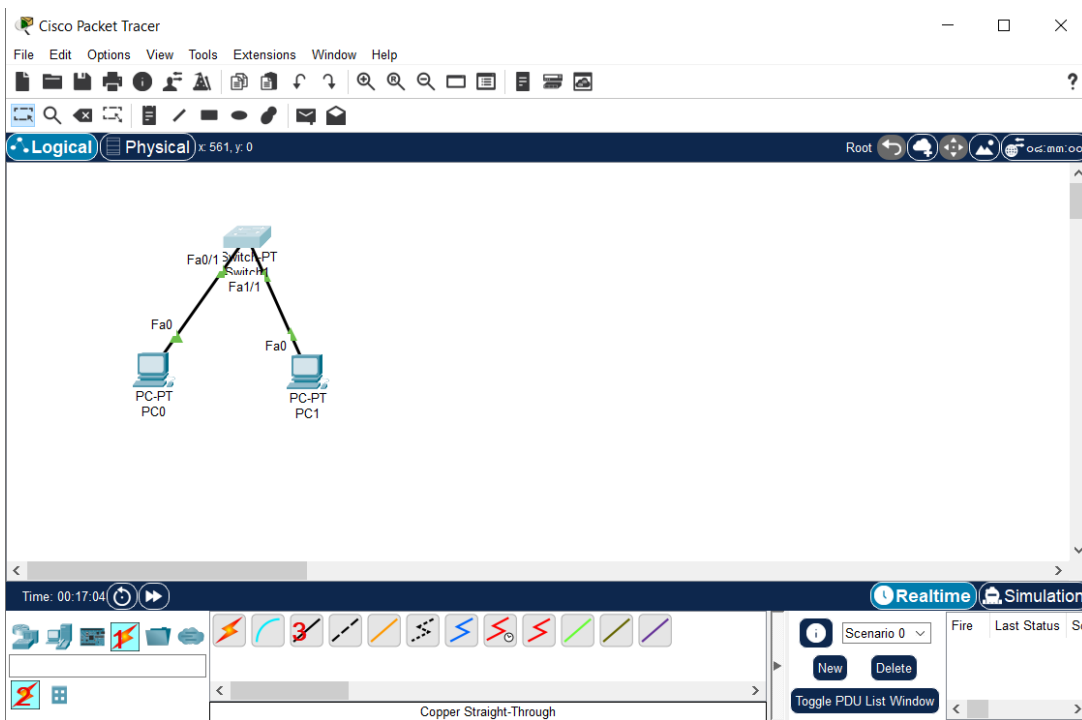
- Switch-PT



- PC-PT

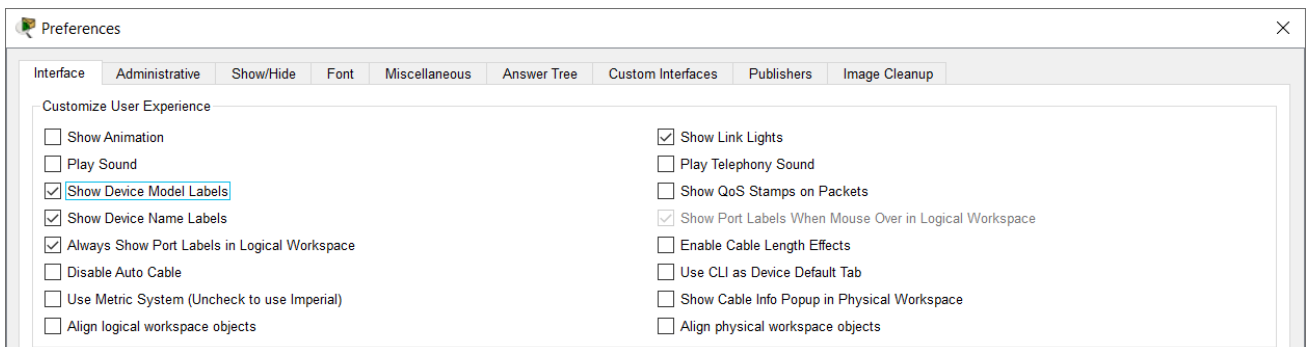


- Copper Straight-Through (UTP cable)



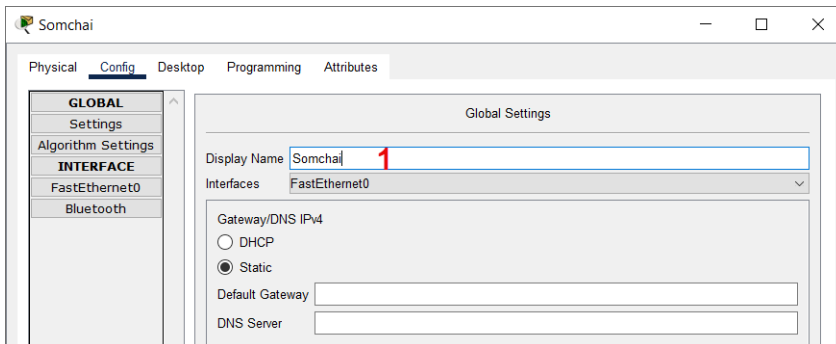
- Interface

Options > Preferences

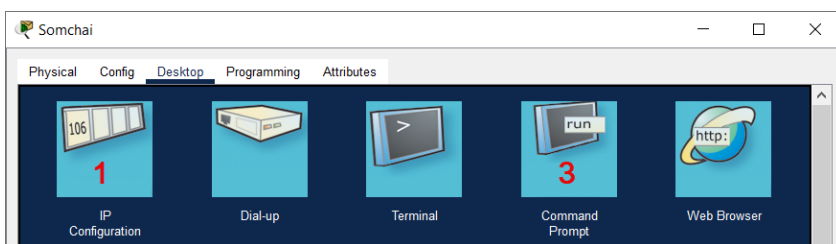


ชุดคำสั่ง PC

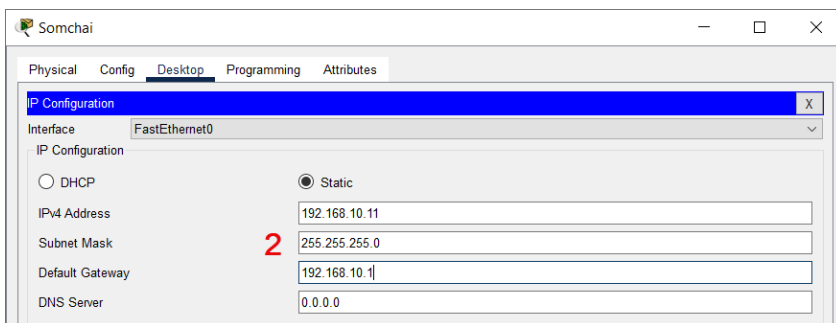
- Display Name



- 1 - IP Configuration

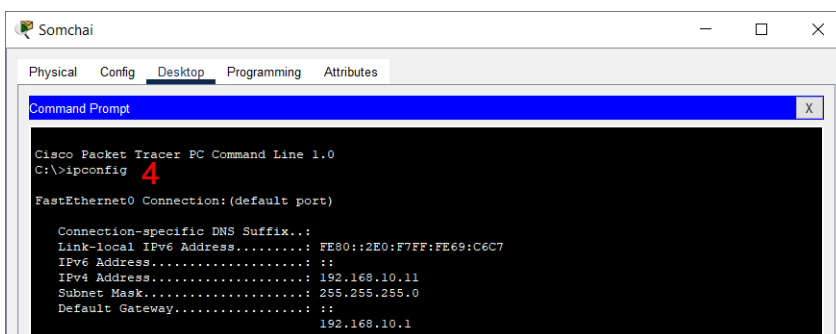


- 2 - Static IP



- 3 - Command Prompt

- 4 - ipconfig



ทดสอบ

- ข้อกำหนด PC

PC	IPv4 Address	Subnet Mask	Default Gateway
A	192.168.1.2	255.255.255.0	192.168.1.1
B	192.168.1.3	255.255.255.0	192.168.1.1

- A Ping B

A > Command Prompt

C:\> ping 192.168.1.3

Pinging 192.168.1.3 with 32 bytes of data:

```
Reply from 192.168.1.3: bytes=32 time<1ms TTL=128
Reply from 192.168.1.3: bytes=32 time<1ms TTL=128
Reply from 192.168.1.3: bytes=32 time<1ms TTL=128
Reply from 192.168.1.3: bytes=32 time<1ms TTL=128
```

Ping statistics for 192.168.1.2:

```
Packets: Sent = 4, Received = 4, Lost = 0 (0% loss),
Approximate round trip times in milli-seconds:
    Minimum = 0ms, Maximum = 0ms, Average = 0ms
```

- Realtime
- Simulation